

## Bluetooth and Networking Features

Use the bookmarks in the left-hand column to jump to the QuickHelp answers to these questions:

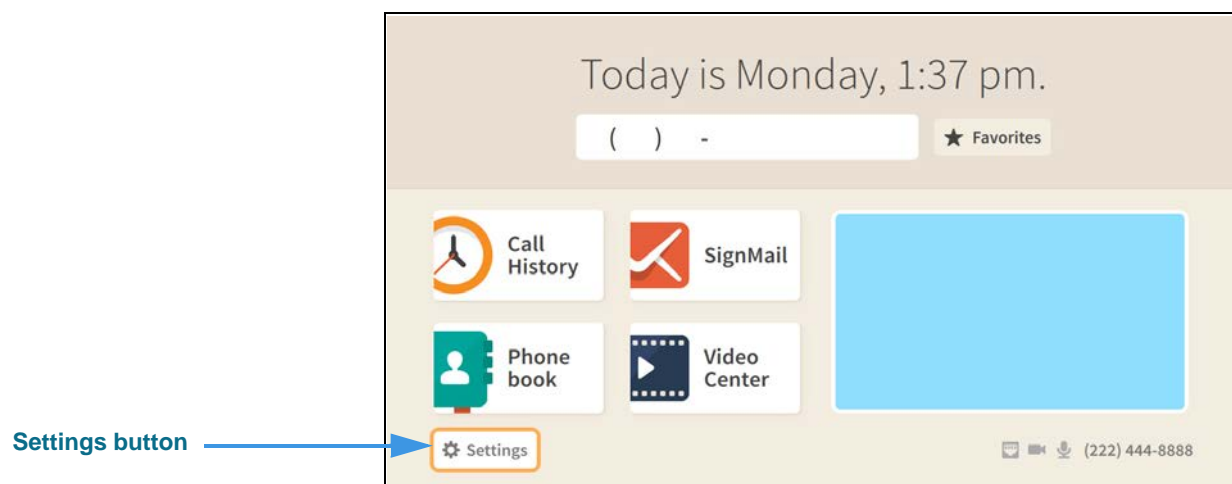
***How do I connect a Bluetooth keyboard to my ntouch VP2?***

***How do I change my network from Wired to Wireless?***

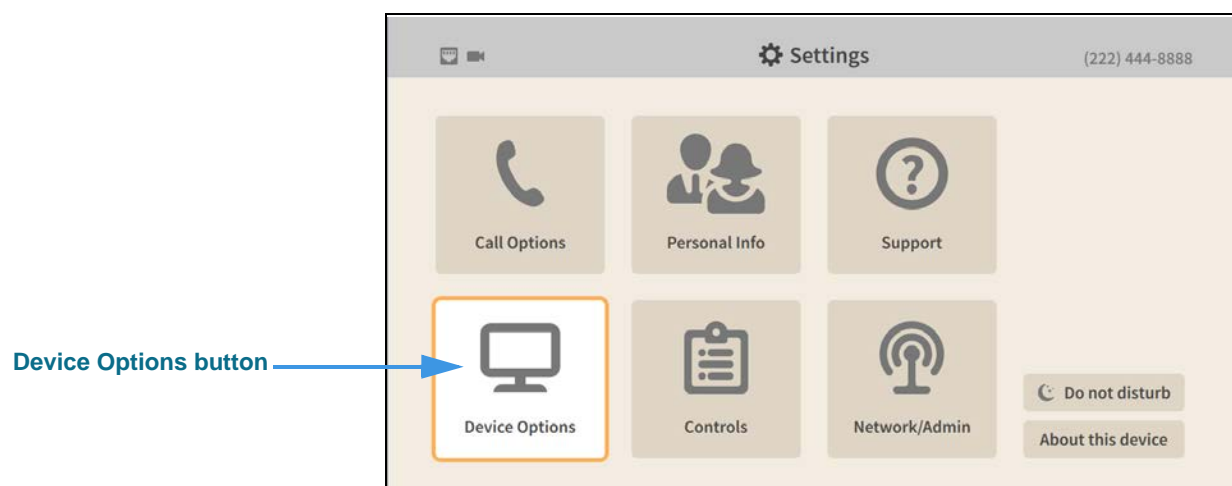
### How do I connect a Bluetooth keyboard to my ntouch VP2?

You can connect Bluetooth keyboards to your ntouch VP2. Sorenson has confirmed that these keyboards work with ntouch VP2: Logitech K480 and K380, B-Typer BK-310, Apple Keyboard MC184LL/B, SPARIN Mini Bluetooth Keyboard, SIG 02-1720A.

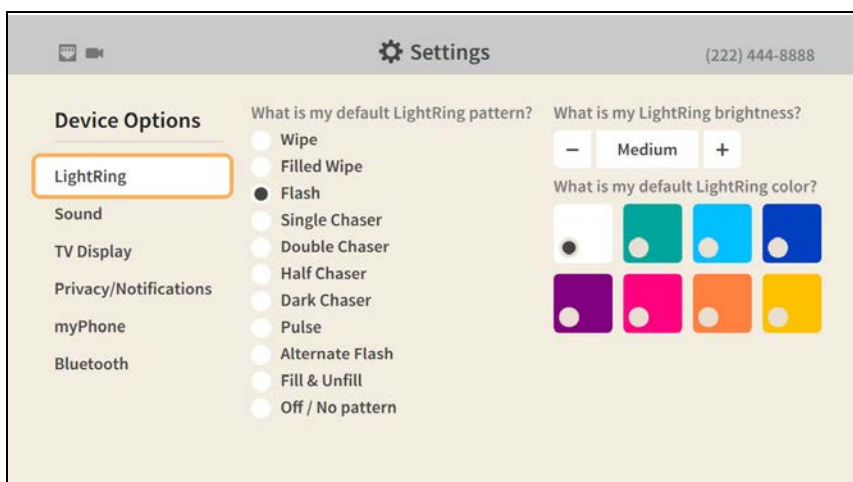
**Step 1.** Start at the Home screen as shown below.



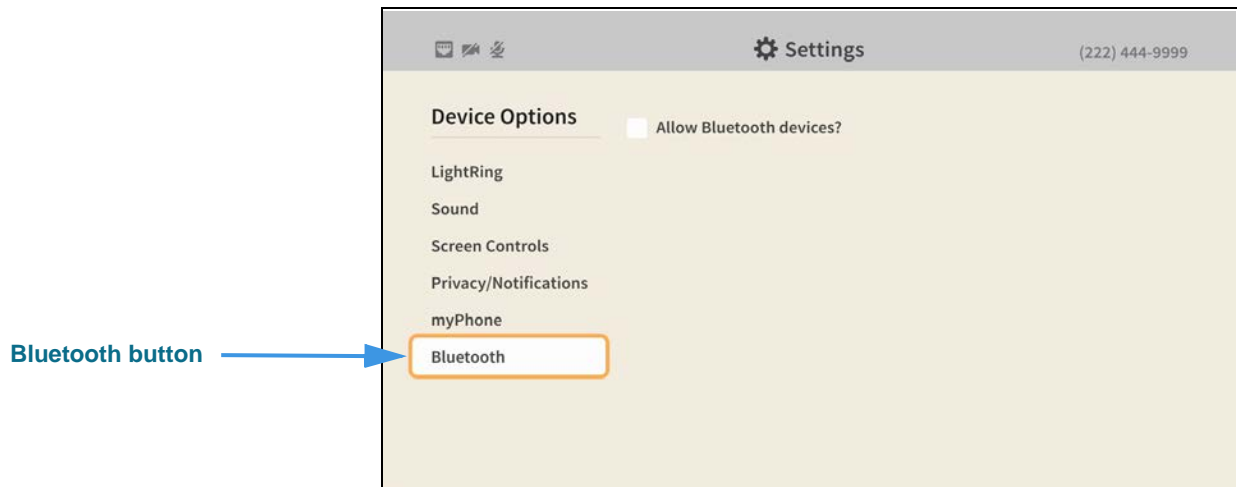
**Step 2.** Select the **Settings** button to open the screen shown below.



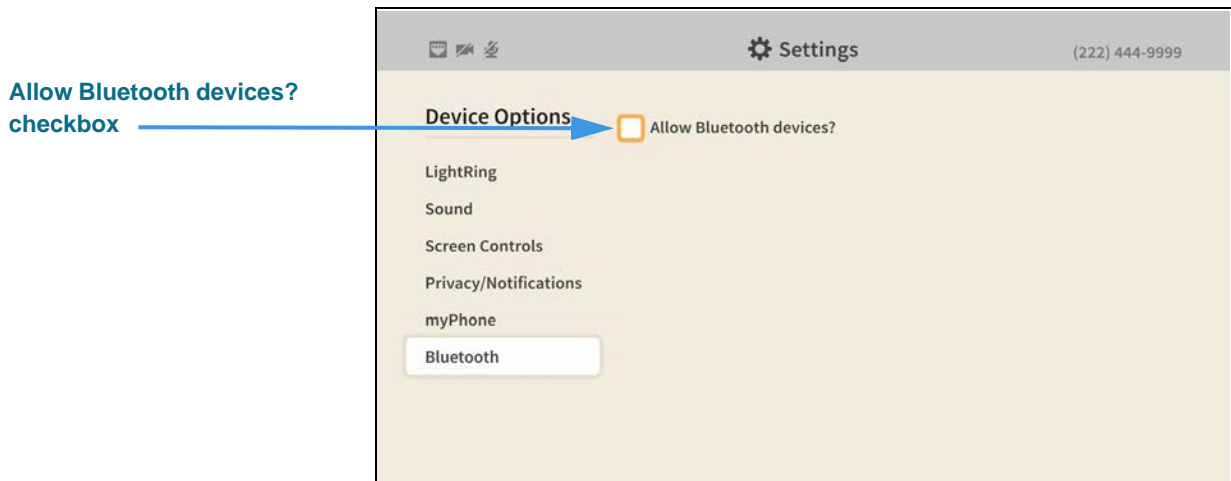
**Step 3.** Select the **Device Options** button to open the screen shown below.



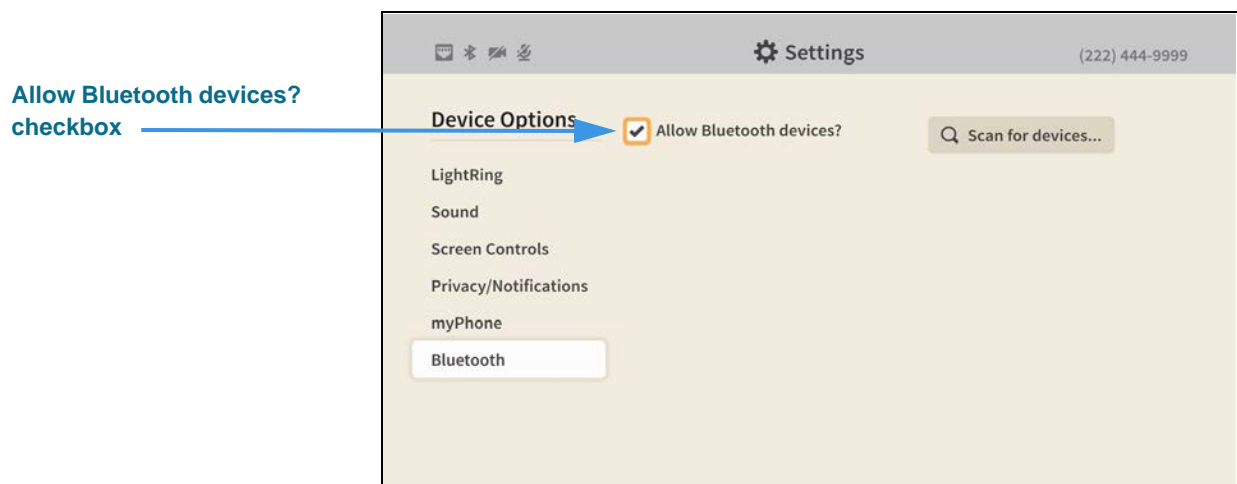
Step 4. Move to the **Bluetooth** button as shown below.



Step 5. Move to the **Allow Bluetooth devices?** checkbox as shown below.

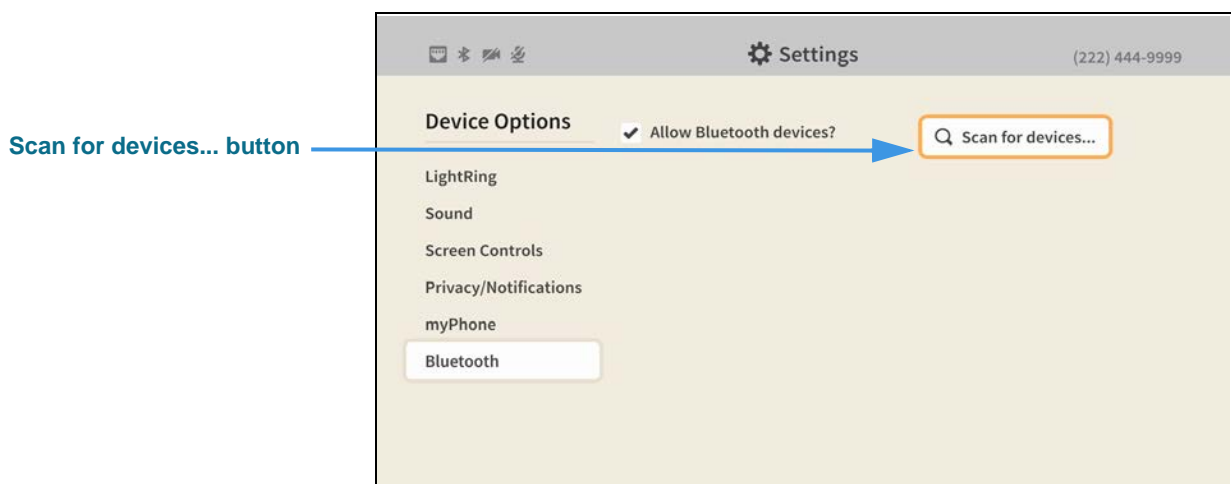


Step 6. Select the **Allow Bluetooth devices?** checkbox to add a check as shown below.



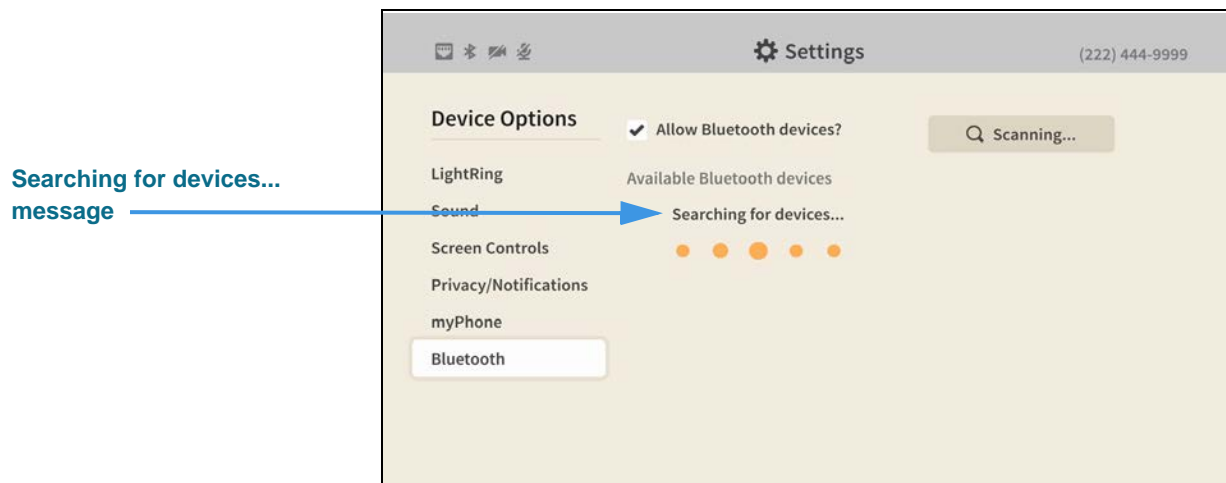
Selecting the **Allow Bluetooth devices?** checkbox as revealed the **Scan for devices...** button at the top-right of the screen.

Step 7. Move to the **Scan for devices...** button as shown below.

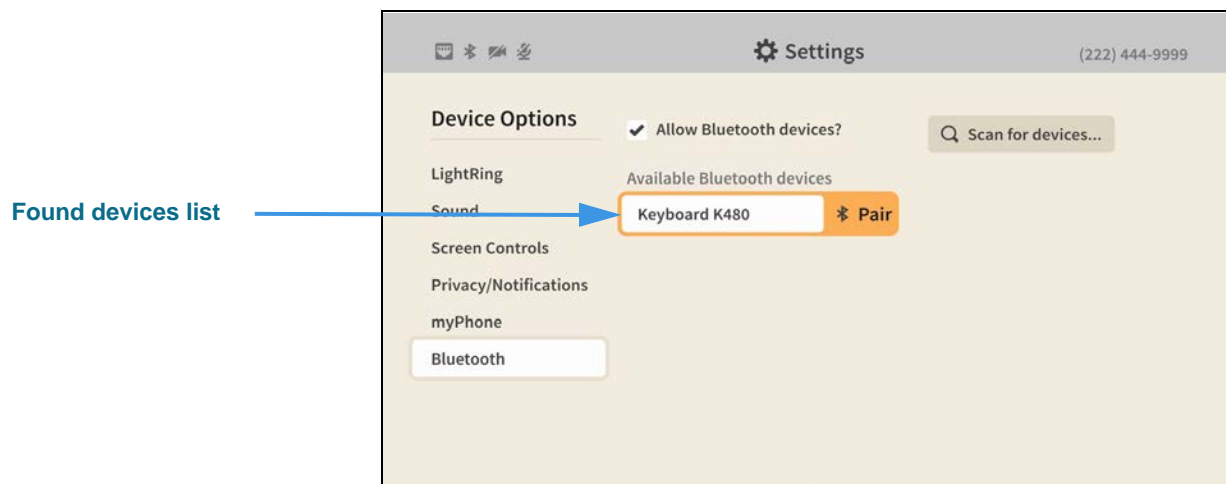


Step 8. Put your Bluetooth device into its "pairing" (or "connect") mode before continuing. Your ntouch VP2 will not be able to detect the device unless it is ready to pair.

Step 9. Select the **Scan for devices...** button to begin the scan as shown below.

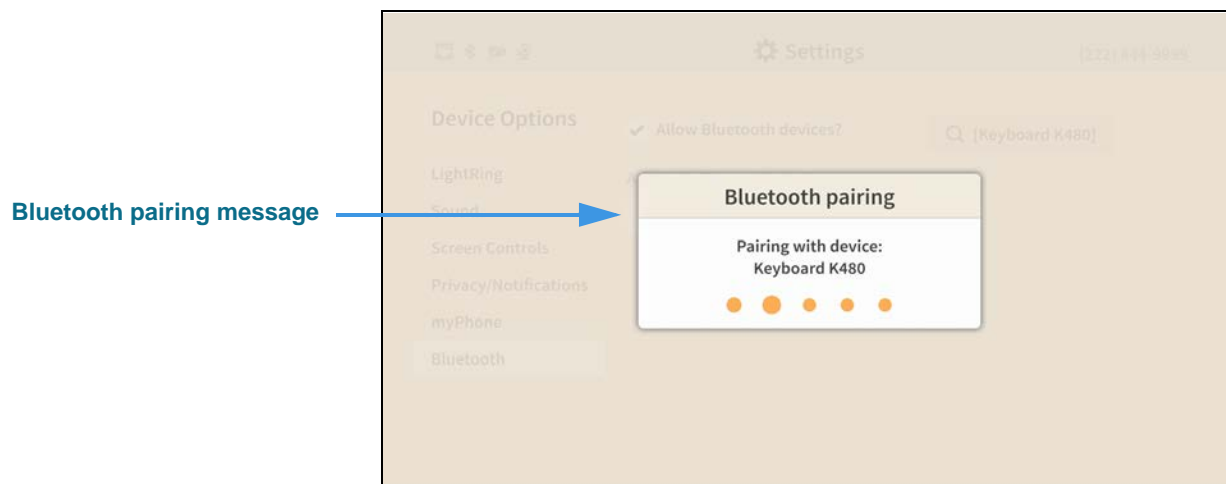


Step 10. When the scan is completed, you will see a message like the one shown below.



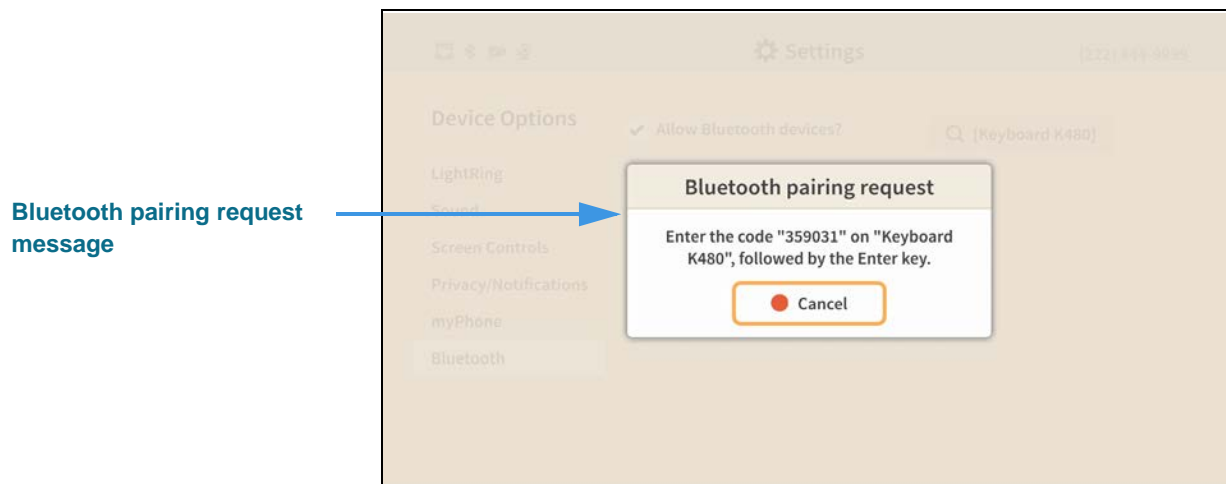
This example shows one keyboard (a Logitech K480) was detected by the videophone.

Step 11. Select the **Pair** button for the device you want to connect to the videophone. You will then see a message like the one shown below.

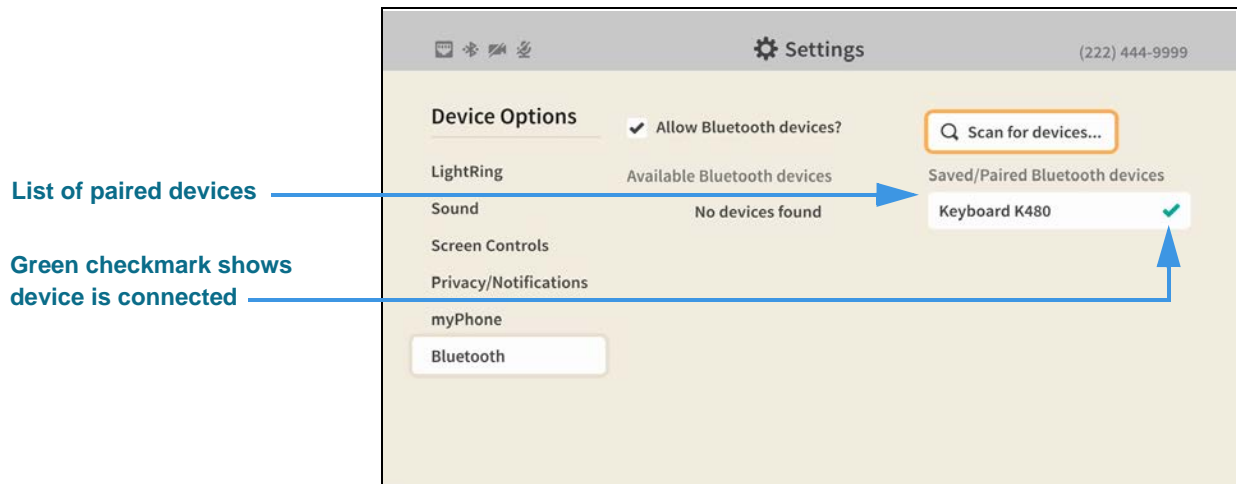


If you see a dialog that says the connection failed, select the **Try again** button in the dialog to restart the pairing.

Step 12. You will then see a pairing request dialog like the one shown below.



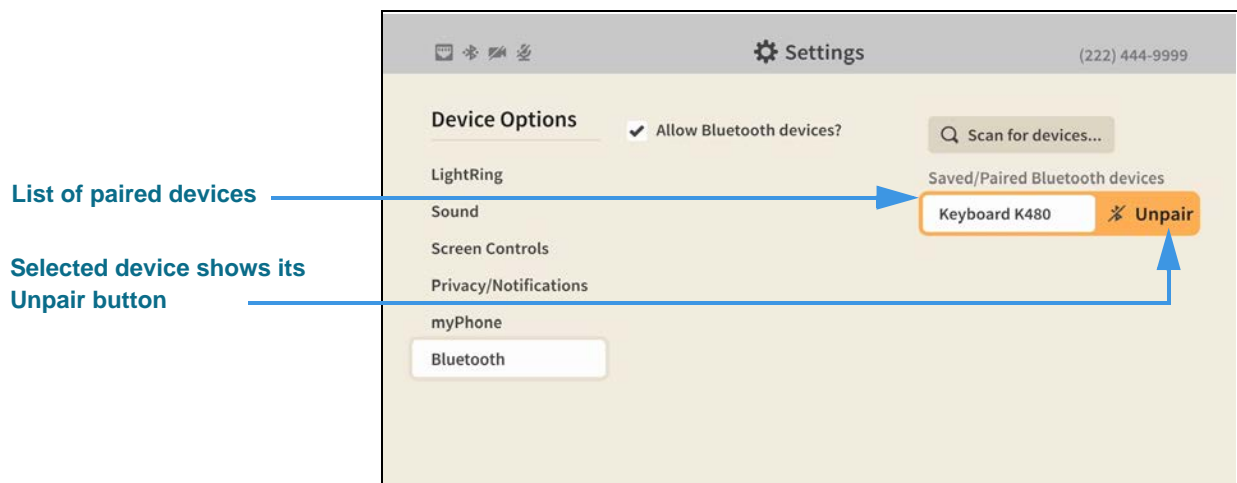
Step 13. On the Bluetooth keyboard, type the characters shown in the dialog to complete the pairing process and display the screen shown below.



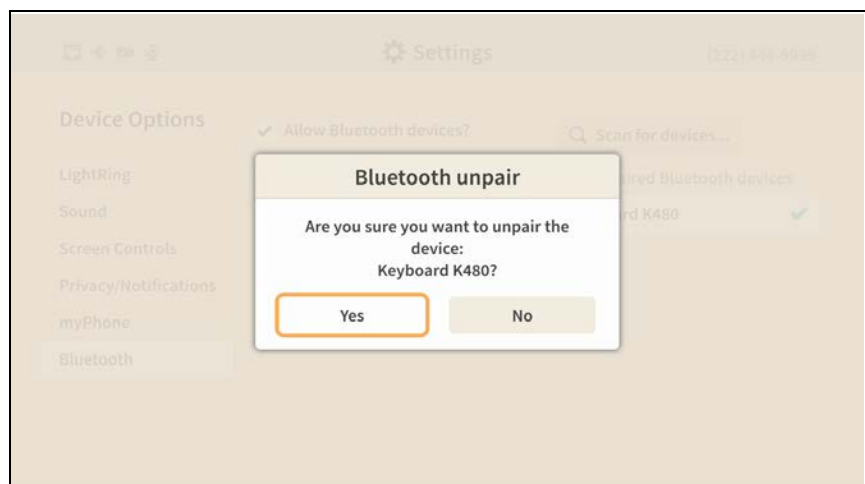
The right side of the screen now shows a list of Saved/Paired Bluetooth devices. The green checkmark next to the device name shows that the device is currently connected. You can have more than one keyboard paired and connected at a time.

Return to the *Home* screen by pressing the **Home** key on the remote control. Your selections will be saved.

Step 14. If you need to unpair a device, move to the device you want to unpair as shown below.



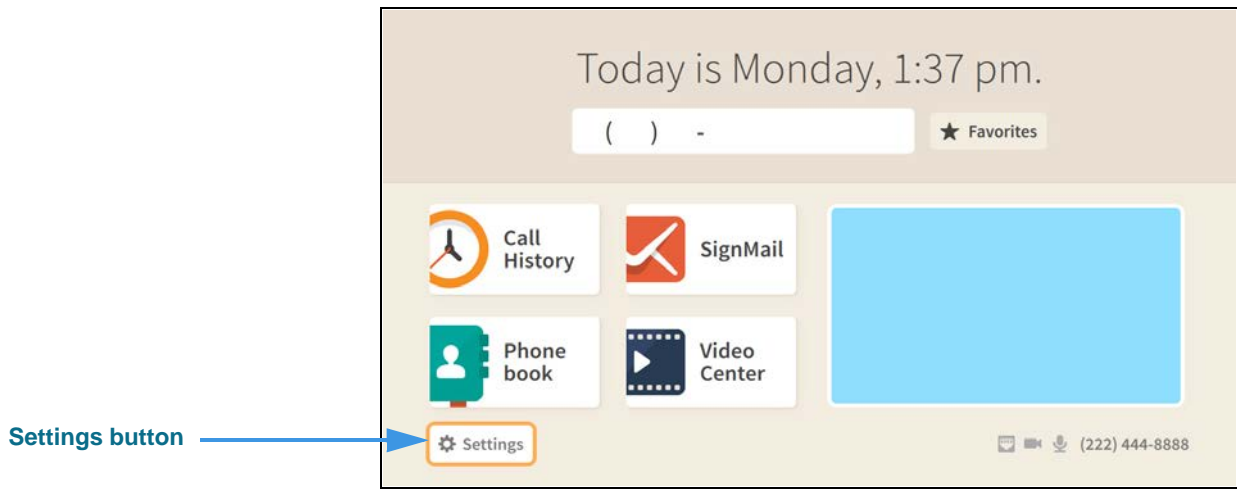
Step 15. To unpair the device, select the **Unpair** button to open the dialog shown below.



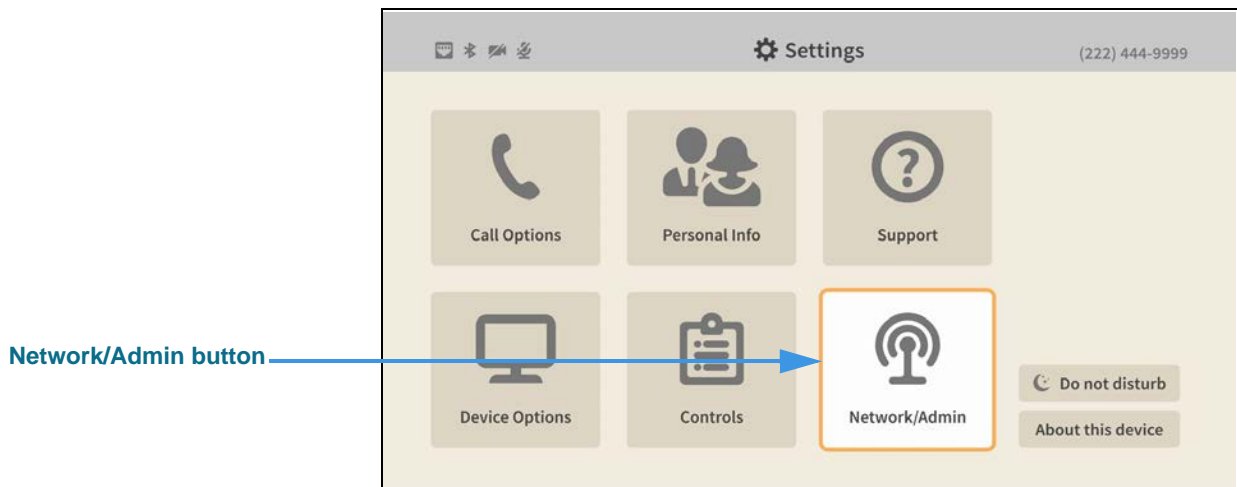
Step 16. Select the **Yes** button to unpair the device.

# How do I change my network from Wired to Wireless?

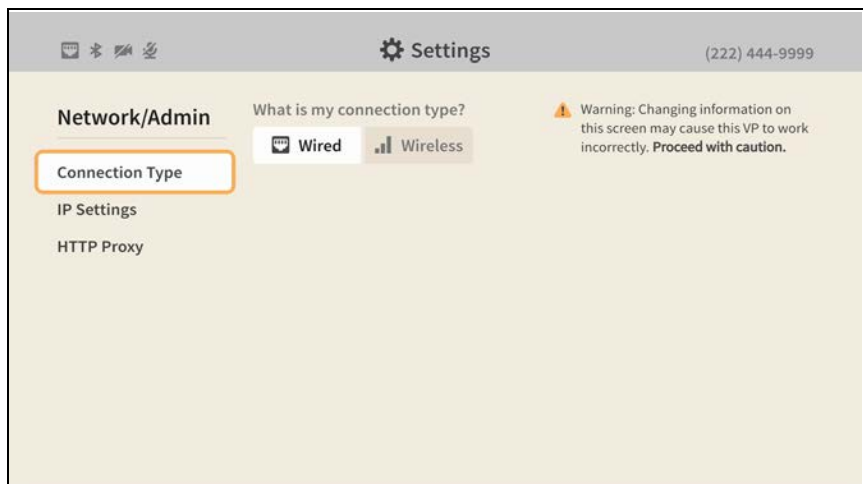
Step 1. Start at the Home screen as shown below.



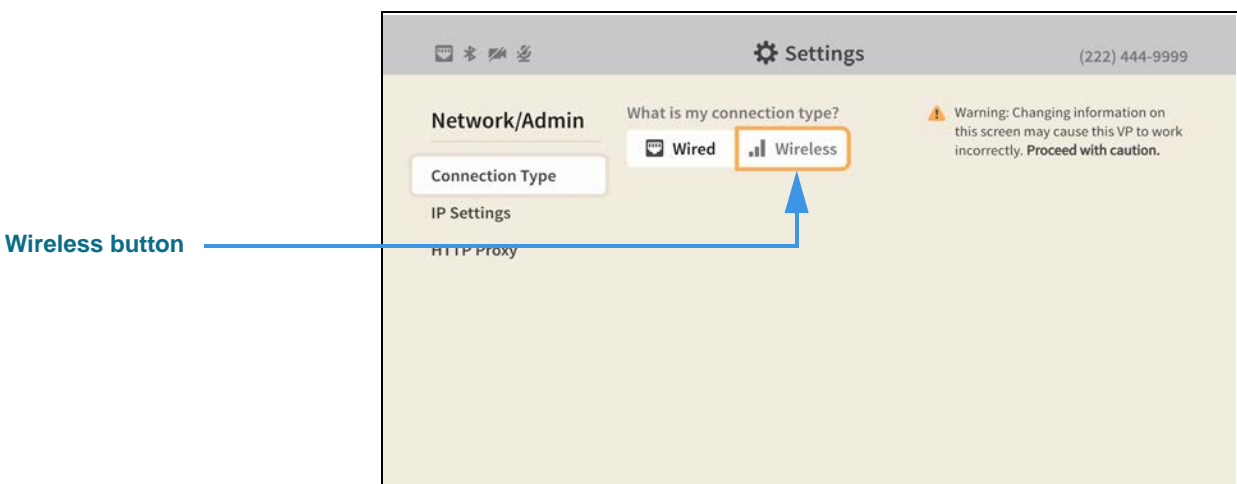
Step 2. Select the **Settings** button to open the screen shown below.



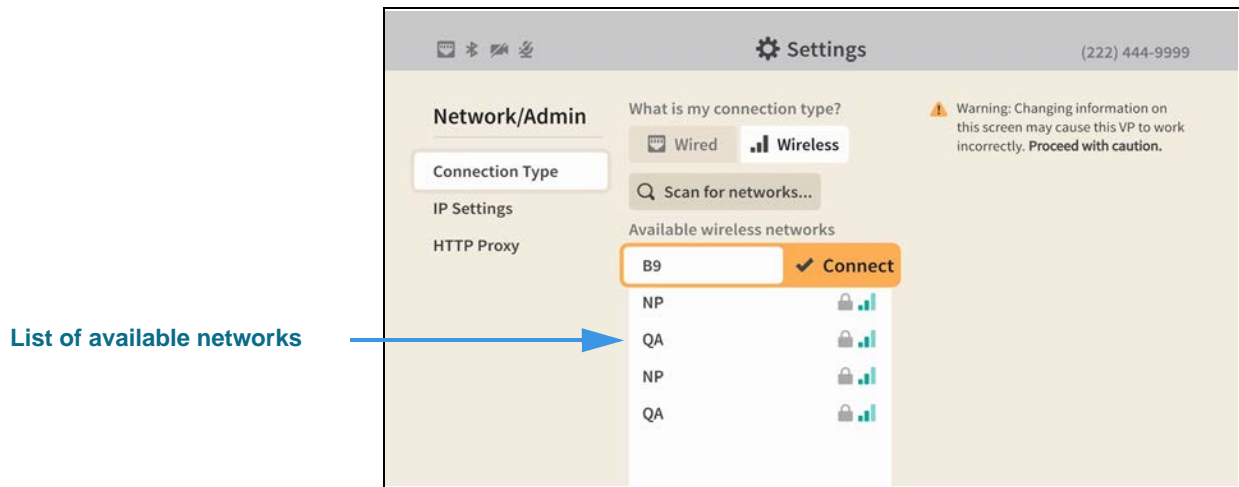
Step 3. Select the **Network/Admin** button to open the screen shown below.



Step 4. Move to the **Wireless** button as shown below.

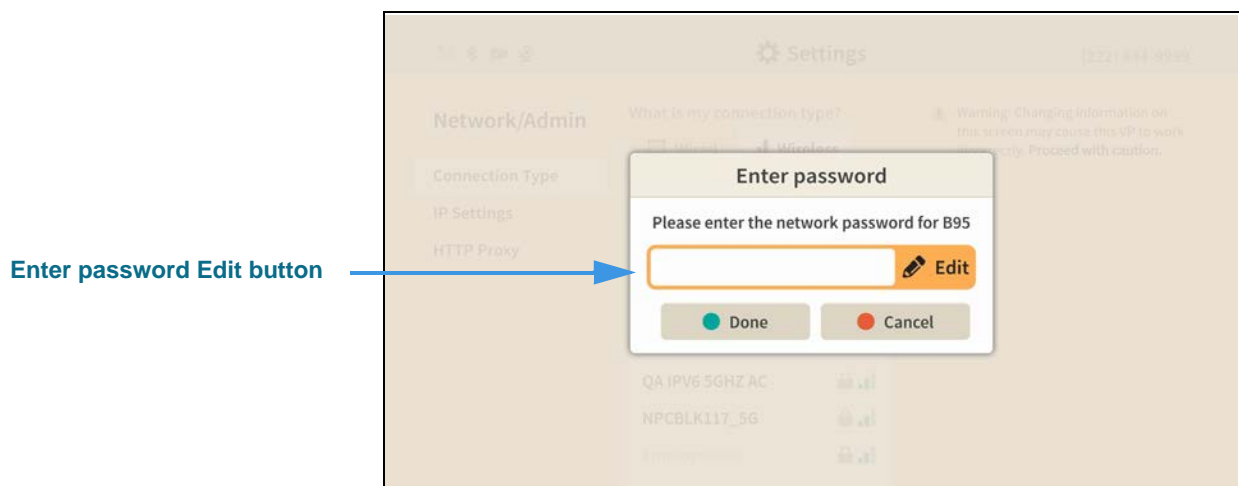


Step 5. Select the **Wireless** button to begin a scan for wireless networks. The available networks (those within range) will appear in a list as shown below.

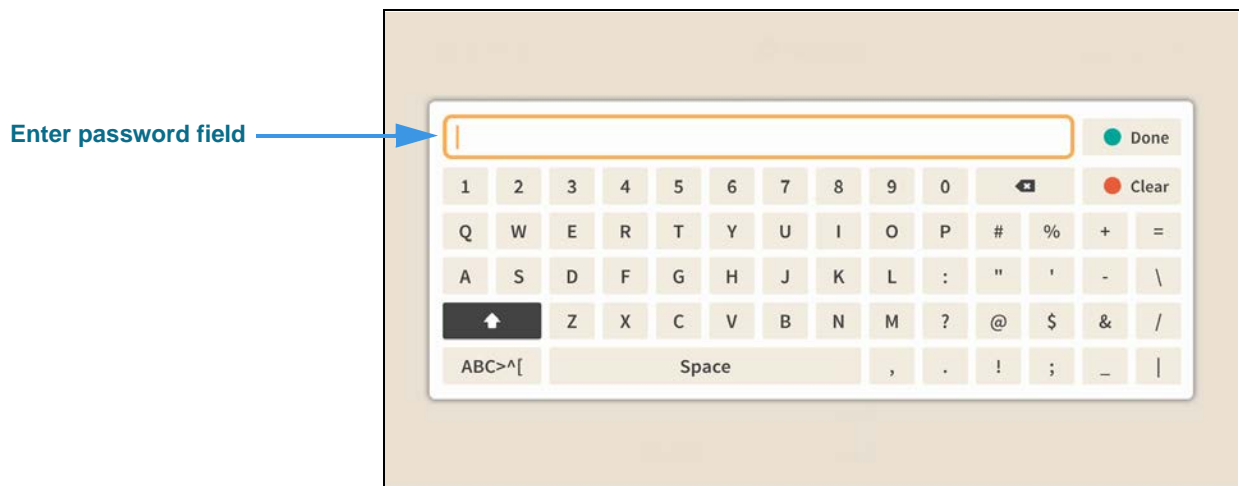


The network names in this sample image all have two-character names such as “B9.” You should only connect to known, secured networks (i.e., you own wireless router).

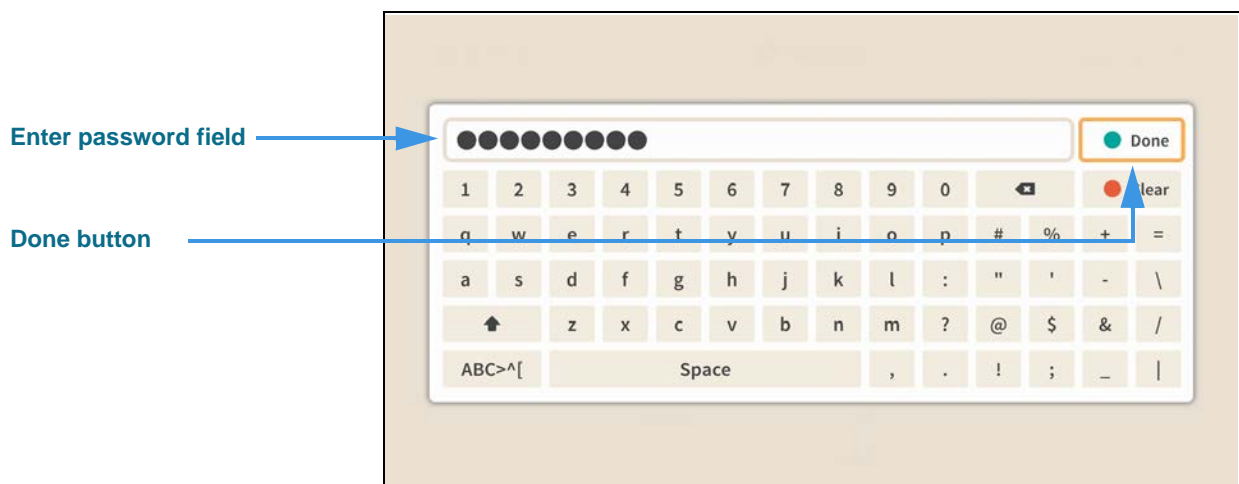
Step 6. Select the **Connect** button for the wireless network you want to use. The Enter password dialog will then appear as shown below.



Step 7. Select the **Edit** button to open the dialog shown below.

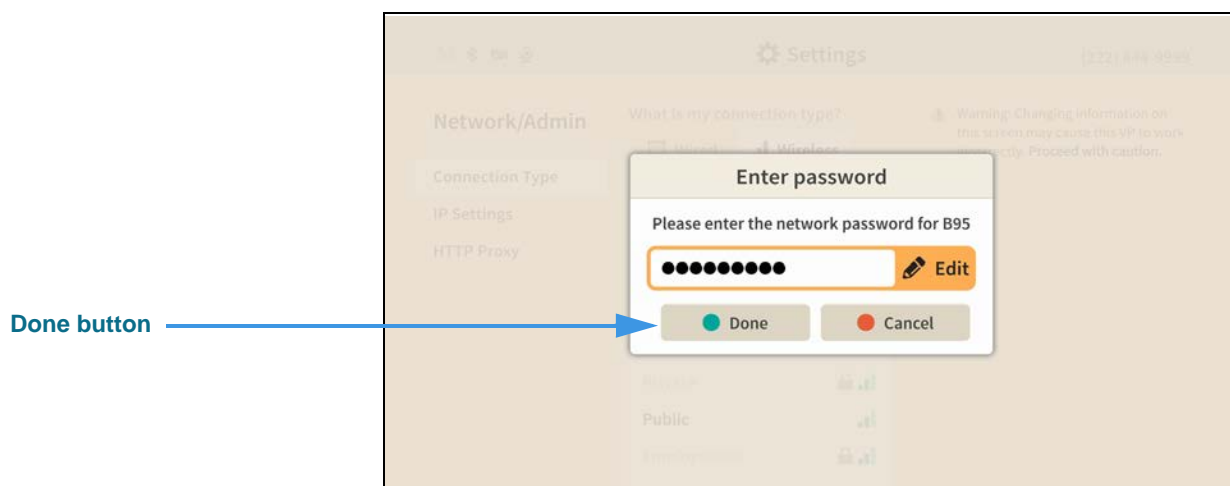


Step 8. Use the on-screen keyboard to enter the **password** (key) for the wireless network. As you enter the password, the text will change to black dots as shown below.

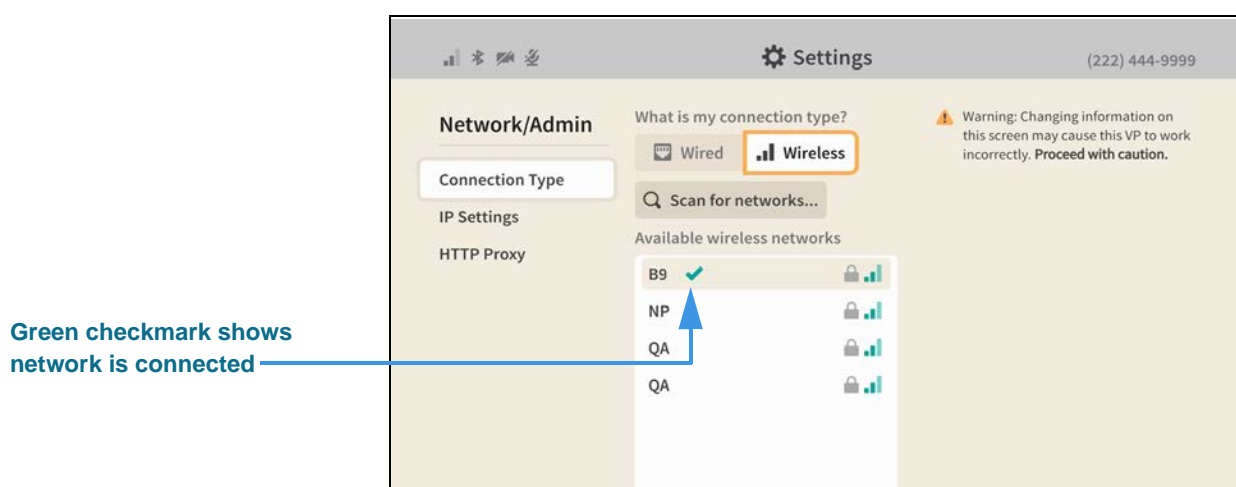




Step 9. Select the **Done** button to return to the dialog shown below.



Step 10. Select the **Done** button to send the password and attempt to connect to the wireless network. If successful, you will see the screen shown below.



The green checkmark next to the network name shows that the videophone is currently connected to that network.

If you entered the wrong password, the videophone will either redisplay the “Enter password” dialog (because the entered password was too short) or will show a “Network Connection Failed” dialog (because the entered password was wrong). In either case, the solution is to try entering the correct password again.

Return to the *Home* screen by pressing the **Home** key on the remote control. Your selections will be saved.

**Note:** If the ntouch VP2 cannot connect to a wireless network to which it has successfully connected in the past (for example, if the password was changed), the videophone will **not** automatically show the “Enter password” dialog. Instead, the ntouch VP2 will show the “Disconnected Wi-Fi” icon as shown below on the Home screen.

**Wi-Fi Disconnected icon** 

To reconnect to the same wireless network, first go to the Network Settings screen (as shown in Step 5, above) and rescan for available Wi-Fi networks. When the list appears, select the desired Wi-Fi network. You will then see a “Network Connection Failed” message because the videophone will have sent the last stored password which will fail to authenticate. To proceed, go back to Step 5, rescan for Wi-Fi networks, and then re-select the desired Wi-Fi network. On this second selection of the desired Wi-Fi network, the ntouch VP2 will redisplay the “Enter password” dialog in which you can enter the correct (i.e., the new) password. The ntouch VP2 will then store the new password and show the “Connected Wi-Fi” icon as shown below on the Home screen.

**Wi-Fi Connected icon** 